

**GOLD LINE™**  
**QUALITY PARTS**



RIGHT QUALITY  
RIGHT PRICE  
RIGHT AWAY

# Spring Brake Chambers for Trucks, Tractors and Trailers



[www.goldlinequalityparts.com](http://www.goldlinequalityparts.com)

Edition 2016-01

powered by **SAF Holland**

# ValueShield

DESIGNED FOR COST  
CONSCIOUS CUSTOMERS



**GOLD LINE™**  
QUALITY PARTS

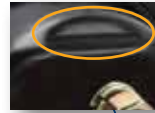
**2-YEAR  
WARRANTY**

**PREMIUM DIAPHRAGMS**

feature high quality contaminate resistant rubber with nylon reinforced fabric tested well beyond the toughest industry specifications.

**MOUNTING REINFORCEMENT**

located to improve durability.



**LONG LENGTH PUSH ROD**

for customizing to desired length.



**MAIN SPRING**

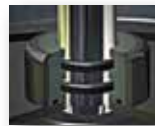
specially coated with zinc phosphate base, then e-coated



for superior corrosion protection.

**CENTER SEAL**

with two self lubricating silicon o-rings provides the best possible leak protection for improved service life and lower maintenance costs.



**STEEL AND ALUMINUM DESIGN**

E-coated steel spring housing with aluminum center section.



**SELF-GUIDED PRESSURE PLATE**

assures consistent alignment of spring providing super smooth operation and less wear. Steel APR plate is e-coated to eliminate corrosion degradation.

VALUE SHIELD	GOOD - 2 YEAR WARRANTY	
PART NO.	DESCRIPTION	
50866044	3030 Tandem, 12.50" Long Push Rod, No Clevis, 2.5" Stroke <sup>1</sup>	
50866001	3030 Tandem, 13.00" Long Push Rod, No Clevis, 3.0" Stroke <sup>1</sup>	

Note: <sup>1</sup>Ports located 90° from mounting studs. Dimensions listed are for non-caged units.

# DuraShield

BETTER

**GOLD LINE™**  
QUALITY PARTS

DESIGNED FOR  
SUPERIOR PERFORMANCE

4-YEAR  
WARRANTY

### PREMIUM DIAPHRAGMS

feature high quality contaminate resistant rubber with nylon reinforced fabric tested well beyond the toughest industry specifications.

### HIGH VIBRATION "HV" MOUNTING BASE

reduces vibration for longer life.

### MOUNTING REINFORCEMENT

located to improve durability.

### LONG LENGTH PUSH ROD

for customizing to desired length.

### FULL IMMERSION ELECTRO-DEPOSITION COATING

inside and out for better corrosion protection.

### MAIN SPRING

specially coated with zinc phosphate base, then e-coated for superior corrosion protection.

### SELF-GUIDED PRESSURE PLATE

assures consistent alignment of spring providing super smooth operation and less wear. Steel APR plate is e-coated to eliminate corrosion degradation.

### CENTER SEAL

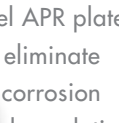
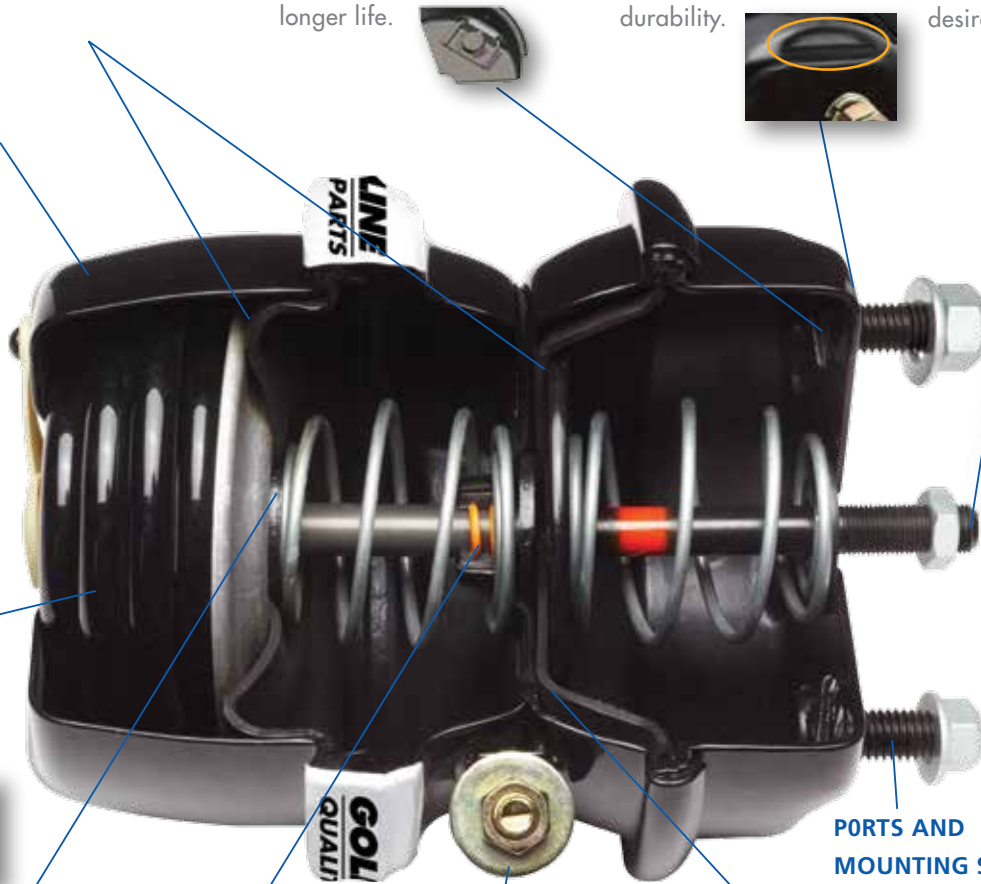
with two self lubricating silicon o-rings provides the best possible leak protection for improved service life and lower maintenance costs.

### RELEASE TOOL

included on chamber for maintenance ease.

### ALL STEEL DESIGN

provides durable, air tight center section that virtually eliminates leaks and structural failures.



DURA SHIELD	BETTER - 4 YEAR WARRANTY
PART NO.	DESCRIPTION
50866002	3030 Tandem, 10.35" Long Push Rod, No Clevis, 2.5" Stroke <sup>1</sup>
50866003	3030 Tandem, 10.35" Long Push Rod, No Clevis, 3.0" Stroke <sup>1</sup>
50866038	3030 Tandem, 12.25" Long Push Rod, No Clevis, 2.5" Stroke <sup>2</sup>
50866041	3030 Tandem, 12.75" Long Push Rod, No Clevis, 3.0" Stroke <sup>2</sup>

Notes: <sup>1</sup>Ports located 90° from mounting studs.

<sup>2</sup>Ports in line with mounting studs.

Dimensions listed are for non-caged units.

# ProShield **BEST**

**GOLD LINE™**  
QUALITY PARTS

**6-YEAR WARRANTY**

## THE ULTIMATE IN SPRING BRAKE PERFORMANCE AND CORROSION RESISTANCE

### PREMIUM DIAPHRAGMS

feature high quality contaminate resistant rubber with nylon reinforced fabric tested well beyond the toughest industry specifications.

### FULL IMMERSION ELECTRO-DEPOSITION COATING

inside and out for better corrosion protection. Extra layer of powder coating protection on exterior.

### MAIN SPRING

In addition to the five-stage coating system, the ProShield includes a UL base coating for the ultimate in corrosion protection. On many conventional designs the coils rub together and chip off the coating which can lead to corrosion and failure. Even when spring coils are compressed, they do not touch – see orange gap.



### SELF-GUIDED PRESSURE PLATE

assures consistent alignment of spring providing super smooth operation and less wear. Steel APR plate is e-coated to eliminate corrosion degradation.

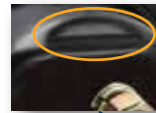
### HIGH VIBRATION "HV" MOUNTING BASE

reduces vibration for longer life.



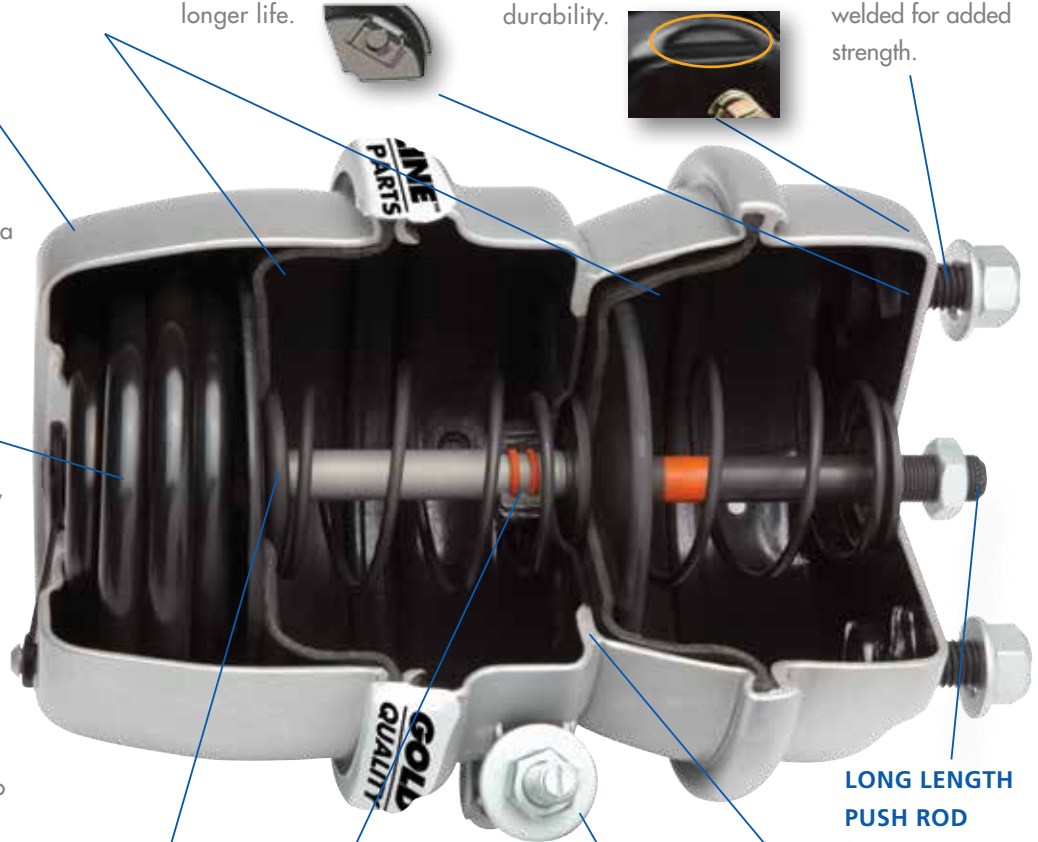
### MOUNTING REINFORCEMENT

located to improve durability.



### PORTS AND MOUNTING STUDS

are arc and resistance welded for added strength.



### CENTER SEAL

with two self lubricating silicon o-rings provides the best possible leak protection for improved service life and lower maintenance costs.



### RELEASE TOOL

included on chamber for maintenance ease.

### LONG LENGTH PUSH ROD

for customizing to desired length.

**ALL STEEL DESIGN** provides durable, air tight center section that virtually eliminates leaks and structural failures.

PRO SHIELD		BEST - 6 YEAR WARRANTY	
PART NO.		DESCRIPTION	
50866004		3030 Tandem, 10.35" Long Push Rod, No Clevis, 2.5" Stroke <sup>1</sup>	
50866005		3030 Tandem, 10.35" Long Push Rod, No Clevis, 3.0" Stroke <sup>1</sup>	
50866042		3030 Tandem, 12.25" Long Push Rod, No Clevis, 2.5" Stroke <sup>2</sup>	
50866043		3030 Tandem, 12.75" Long Push Rod, No Clevis, 3.0" Stroke <sup>2</sup>	

Notes: <sup>1</sup>Ports located 90° from mounting studs.

<sup>2</sup>Ports in line with mounting studs.

Dimensions listed are for non-caged units.

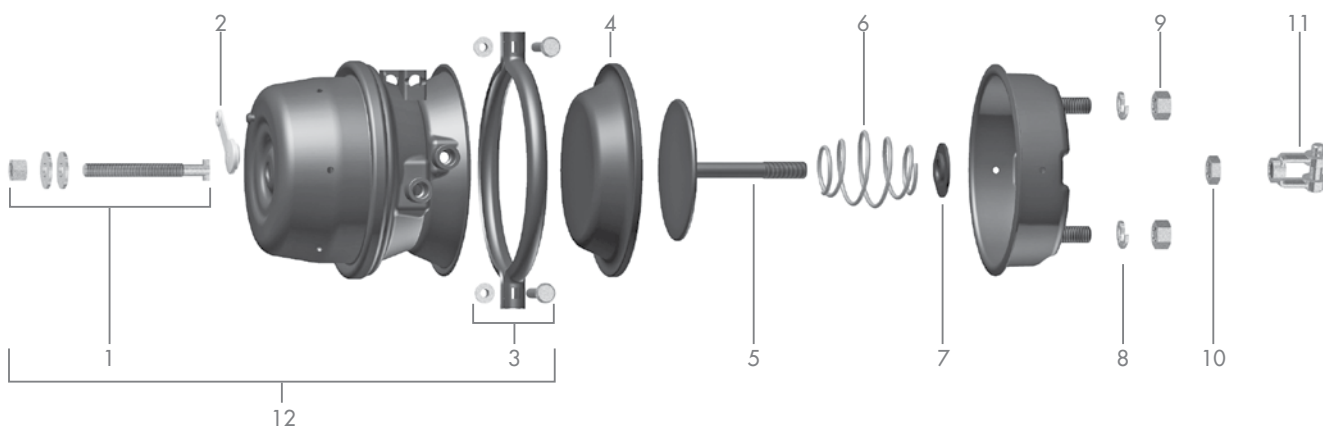
# Dura Service Chamber

DURA SERVICE CHAMBER	4 YEAR WARRANTY
PART NO.	DESCRIPTION
50866010	Type 20 Service Chamber, 10.25" Long Rod, 2.25" Stroke
50866011	Type 24 Service Chamber, 10.25" Long Rod, 2.50" Stroke
50866012	Type 30 Service Chamber, 10.25" Long Rod, 2.50" Stroke
50866013	Type 30 Service Chamber, 10.30" Long Rod, 3.00" Stroke



Note: Rod dimensions listed are extended lengths.

## Parts List

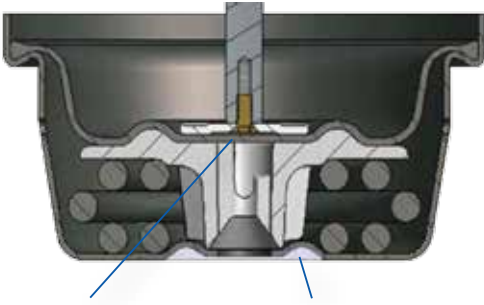


### BRAKE CHAMBER PARTS LIST

ITEM	DESCRIPTION	PART NUMBER						QTY.
		TYPE 20 2.25" STROKE	TYPE 20 LS 2.5" STROKE	TYPE 24 2.5" STROKE	TYPE 24 LS 3.0" STROKE	TYPE 30 2.5" STROKE	TYPE 30 LS 3.0" STROKE	
1	Release Bolt Assembly	50866014	50866014	50866014	50866015	50866014	50866015	1
2	Dust Cap	50866016	50866016	50866016	50866016	50866016	50866016	1
3	Clamp, Bolt and Nut Assembly	50866019	50866019	50866018	50866018	50866017*	50866017*	1
4	Diaphragms	50866024	50866025	50866022	50866023	50866020	50866021	1
5	Push Rods Rod Length	50866030 11.00"	50866031 11.00"	50866031 11.10"	50866031 11.00"	50866026 15.15"	50866027 15.65"	1
6	Return Springs	50866032	50866032	50866032	50866032	50866032	50866032	1
7	Push Rod Plastic Guide	50866033	50866033	50866033	50866033	50866033	50866033	1
8	Mounting Lock Washer	50866037	50866037	50866037	50866037	50866037	50866037	2
9	Mounting Nut	50866034	50866034	50866034	50866034	50866034	50866034	2
10	Push Rod Jam Nut	50866035	50866035	50866035	50866035	50866035	50866035	1
11	Clevis (Yokes) Assembly	50866036	50866036	50866036	50866036	50866036	50866036	1
12	Piggy Back Kit - Dura Shield	-	-	-	-	50866008	50866009	1

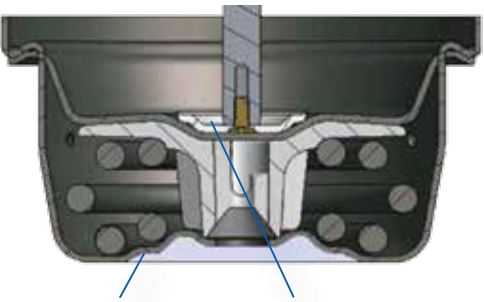
\* Aftermarket wide clamp as found in piggyback kits.

## CONVENTIONAL DESIGN



No recessed pressure plate.

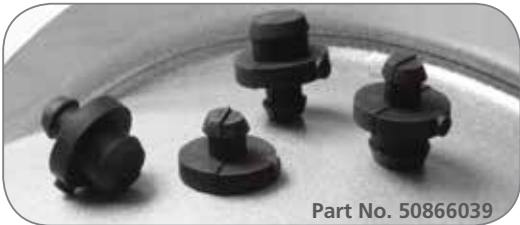
## PROSHIELD DESIGN



ProShield inverted bottom housing reduces both spring coil to coil contact and spring coil to spring housing contact.

ProShield recessed pressure plate captures the APR plate helping to prevent the power spring from drifting.

## UNIVERSAL DRAIN HOLE PLUG & DUST BOOT ASSEMBLY AVAILABLE FOR SEVERE-DUTY APPLICATIONS



Part No. 50866039

Optional universal drain hole plug and dust boot assembly will help keep contaminants and debris out of your brake to significantly extend its service life.



Part No. 50866040

# FOR CONVENIENCE AND EASE OF PURCHASE, GO WITH OUR SPRING BRAKE PROGRAM.

Our Good, Better, Best spring brake program provides you with the flexibility to offer your fleet customers the right solution to meet their needs.

We are equipped to respond with the best sales and service support in the industry.

Parts are stocked and ready to ship upon receipt of your order.



# **GOLD LINE™**

## **QUALITY PARTS**

**Hi-Temp Wheel Bearing Grease  
and Multi-Purpose Grease for  
General Use**



Multi-Purpose Grease	General	Hi-Temperature
1.4 oz. Grease Tube / 10 Pack (10 lbs.)	G3870002010	G3870003010
5 Gallon Pail (35 lbs.)	G3870002035	G3870003035
16 Gallon Keg (120 lbs.)	G3870002120	G3870003120

*For more information on our Gold Line Quality Parts™,  
please call the number below.*

**Air Springs – Grease – Wheel Bearings –  
Landing Gear Accessories – and More!**

**Call 800-876-3929**

**Canada 519-537-3494**

[www.goldlinequalityparts.com](http://www.goldlinequalityparts.com)

**RIGHT QUALITY · RIGHT PRICE · RIGHT AWAY**

powered by **SAF Holland**